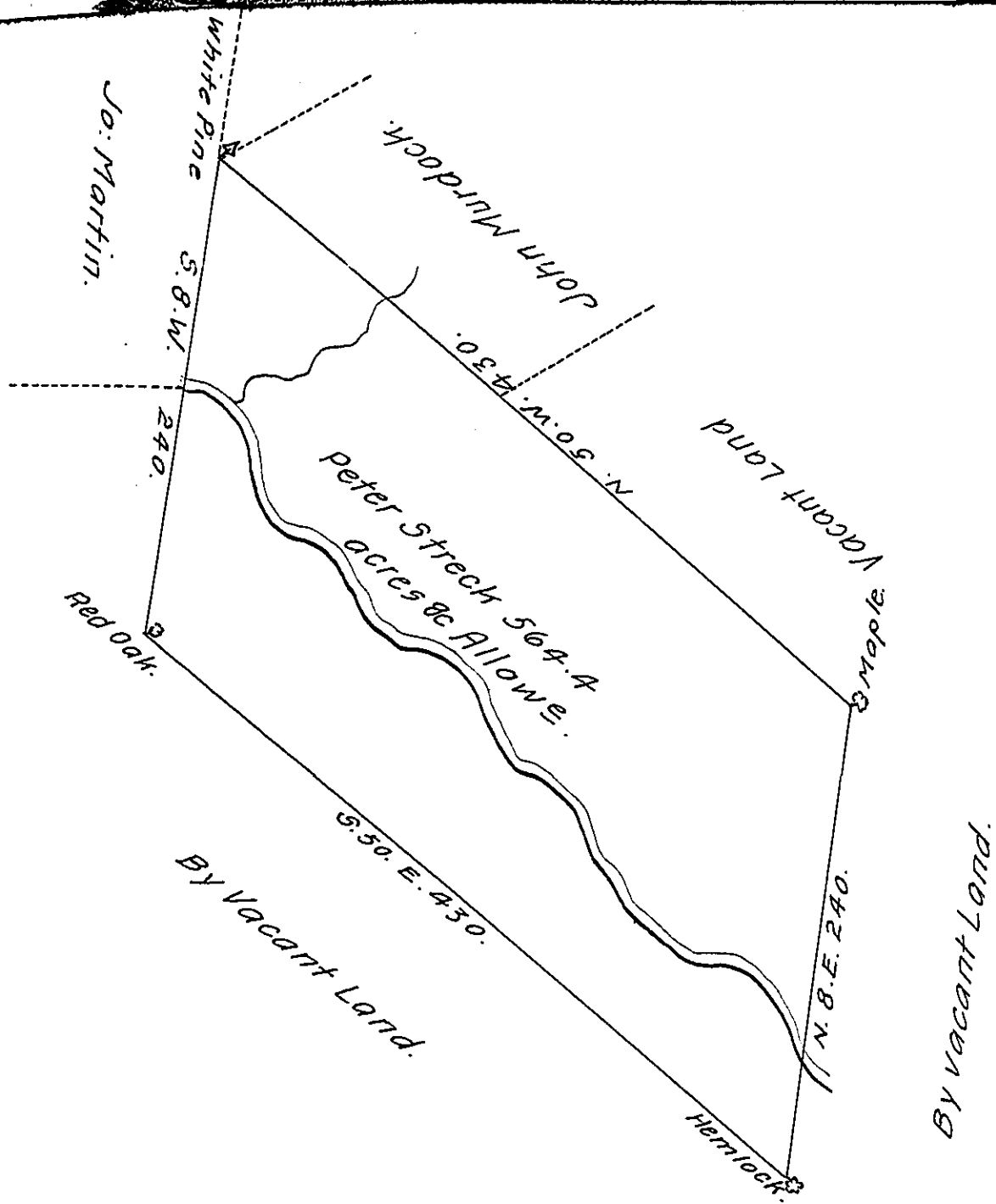


FORM No. 1.



The Draught of a Tract of Land called — situate on the South Branch of Lehigh—Lying in the County of Luzerne containing Five hundred Sixty four acres 77 Perches with usual Allowance for Roads survey'd the 14th day of September Anno Dom. 1786 In Pursuance of a Warrant to Peter Streck dated at Philad^a the 17th day of May Anno Dom., 1785, N^o 246.

To John Lukens, Esq. J. G.,
of Pennsylvania.

Wm. Maclay, D. S.

N.B. The above described Tract of Land is clearly & decidedly in late Northum^a now Lycoming county and not in Luzerne.

D. B.

Feb^y 27th 1799.

IN TESTIMONY that the above is a copy of the original remaining on file in the Department of Internal Affairs of Pennsylvania, made conformably to an Act of Assembly approved the 16th day of February, 1833, I have hereunto set my Hand and caused the Seal of said Department to be affixed at Harrisburg, this twenty eighth day of July, 1910.

Henry Hoover
Secretary of Internal Affairs.